

CLN5 Antibody (N-term)
Affinity Purified Rabbit Polyclonal Antibody (Pab)
Catalog # AP8914a

Specification

CLN5 Antibody (N-term) - Product Information

Application	WB,E
Primary Accession	O75503
Reactivity	Human
Host	Rabbit
Clonality	Polyclonal
Isotype	Rabbit IgG
Calculated MW	41497
Antigen Region	41-69

CLN5 Antibody (N-term) - Additional Information

Gene ID 1203

Other Names

Ceroid-lipofuscinosis neuronal protein 5, Protein CLN5, CLN5

Target/Specificity

This CLN5 antibody is generated from rabbits immunized with a KLH conjugated synthetic peptide between 41-69 amino acids from the N-terminal region of human CLN5.

Dilution

WB~~1:1000

E~~Use at an assay dependent concentration.

Format

Purified polyclonal antibody supplied in PBS with 0.09% (W/V) sodium azide. This antibody is purified through a protein A column, followed by peptide affinity purification.

Storage

Maintain refrigerated at 2-8°C for up to 2 weeks. For long term storage store at -20°C in small aliquots to prevent freeze-thaw cycles.

Precautions

CLN5 Antibody (N-term) is for research use only and not for use in diagnostic or therapeutic procedures.

CLN5 Antibody (N-term) - Protein Information

Name CLN5

Synonyms BMPS {ECO:0000303|PubMed:37708259}

Function [Bis(monoacylglycero)phosphate synthase CLN5, secreted form]: Catalyzes the synthesis of bis(monoacylglycero)phosphate (BMP) via transacylation of 2 molecules of lysophosphatidylglycerol (LPG) (PubMed:[37708259](#)). BMP also known as lysobisphosphatidic acid plays a key role in the formation of intraluminal vesicles and in maintaining intracellular cholesterol homeostasis (PubMed:[37708259](#)). Can use only LPG as the exclusive lysophospholipid acyl donor for base exchange and displays BMP synthase activity towards various LPGs (LPG 14:0, LPG 16:0, LPG 18:0, LPG 18:1) with a higher preference for longer chain lengths (PubMed:[37708259](#)). Plays a role in influencing the retrograde trafficking of lysosomal sorting receptors SORT1 and IGF2R from the endosomes to the trans-Golgi network by controlling the recruitment of retromer complex to the endosomal membrane (PubMed:[22431521](#)). Regulates the localization and activation of RAB7A which is required to recruit the retromer complex to the endosomal membrane (PubMed:[22431521](#)).

Cellular Location

[Bis(monoacylglycero)phosphate synthase CLN5, secreted form]: Lysosome

Tissue Location

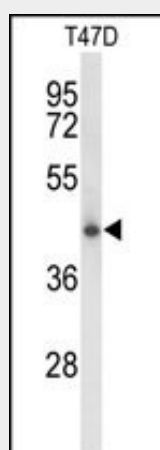
Ubiquitous..

CLN5 Antibody (N-term) - Protocols

Provided below are standard protocols that you may find useful for product applications.

- [Western Blot](#)
- [Blocking Peptides](#)
- [Dot Blot](#)
- [Immunohistochemistry](#)
- [Immunofluorescence](#)
- [Immunoprecipitation](#)
- [Flow Cytometry](#)
- [Cell Culture](#)

CLN5 Antibody (N-term) - Images



Western blot analysis of CLN5 Antibody (N-term) (Cat. #AP8914a) in T47D cell line lysates (35ug/lane). CLN5 (arrow) was detected using the purified Pab.

CLN5 Antibody (N-term) - Background

CLN5 responsible likely is involved in the degradation of post-translationally modified proteins in

lysosomes.

CLN5 Antibody (N-term) - References

Savukoski, M., et al., Am. J. Hum. Genet. 55 (4), 695-701 (1994)
Mole, S.E., et al., Hum. Mutat. 14 (3), 199-215 (1999)